

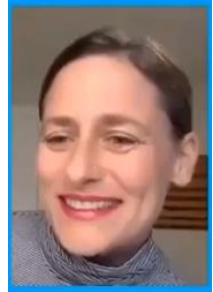
Making Research Personal

This assignment is part of the Making Research Personal project, which was supported through the Association for Psychological Science Teaching Fund Microgrants program. If you use this assignment, please credit it appropriately.

LEARNING CHECK-IN: Dr. Betsy Levy Paluck's Interview

Objectives

- ✓ *To learn about the life of a prominent psychological researcher*
- ✓ *To expand awareness of what psychology research looks like*



APA Goals for the Undergraduate Psychology Major (2.0)

GOAL 4: Communication

- 4.1 Demonstrate effective writing for different purposes

GOAL 3: Ethical and Social Responsibility in a Diverse World

- 3.3 Adopt values that build community at local, national, and global levels

GOAL 5: Professional Development

- 5.5 Develop meaningful professional direction for life after graduation

Instructions

View the [interview](#) with Dr. Betsy Levy Paluck and answer the following questions:

1. What suggestion does Dr. Levy Paluck give to establish a sense of connection in the communities she researches? Why is this important to consider when doing research?
2. Dr. Levy Paluck described how her identity and assumptions have influenced her research choices. How might your identity have an impact on your research choices?
3. How does Dr. Levy Paluck's work impact social justice movements? That is, in her opinion, what is the role of experimentation on social and policy change?
4. What coping methods does Dr. Levy Paluck employ to maintain a healthy work/life balance? What coping methods can you see using yourself?
5. What did Dr. Levy Paluck discuss regarding her experiences and opinions that resonated with you? Were there areas that surprised you? Explain your answers.
6. Considering Dr. Levy Paluck's view of her career, do you believe life as an academic researcher may be a good fit for you? Why or why not?