



DELVAL:
IT'S ALL
ABOUT THE
EXPERIENCE

AT DELAWARE VALLEY UNIVERSITY, IT'S ALL ABOUT THE EXPERIENCE.

Experience DelVal in the moments; from your classes, labs and fieldtrips, to the residence and dining halls, and the athletic field or cheering from the stands. At DelVal you will join a close-knit group of students, faculty and staff for an experience that is very personal. You are not a number and you won't get lost in the crowd. You will find that our campus is a great place to call home.

During your first semester your DelVal I instructor will introduce you to the people and resources that support your path to success. From there you will build your Experience360 (E360) program based on your interests and goals. E360 is much more than an internship program; it also encompasses career exploration and opportunities for student research, leadership, week-long study abroad and hands-on, career-focused learning.

**EXPERIENCE DELVAL. WE CAN'T WAIT
TO MEET YOU!**



Kathryn Payne
Vice President for Enrollment Management



◀ Nina graduated from DelVal in 2021 with a Bachelor's in Animal Science (Pre-Veterinary), and was president of the Class of 2025 at University of Pennsylvania School of Veterinary Medicine. Now, Dr. Dellarte practices at Unionville Equine clinic in Oxford, Pa.



DELVAL AT A GLANCE

30% OF STUDENTS ARE ATHLETES
23 INTERCOLLEGIATE TEAMS
AGGIES
NCAA DIVISION III — MIDDLE ATLANTIC CONFERENCE



1896
YEAR WE WERE FOUNDED AS
THE NATIONAL FARM SCHOOL



2,199
STUDENTS
1,768 UNDERGRAD — 431 GRADUATE

DOYLESTOWN,
PENNSYLVANIA

27 UNDERGRAD
MAJORS OVER 40
SPECIALIZATIONS

PRE-PROFESSIONAL AND PRE-VETERINARY TRACKS
SIX 4 + 1 PROGRAMS EARN YOUR BACHELOR AND MASTER'S DEGREES IN 5 YEARS

100% OF STUDENTS GRADUATE WITH REAL-WORLD EXPERIENCE ON THEIR RESUME

14:1 STUDENT:
FACULTY

100%
OF STUDENTS RECEIVE
NEED-BASED OR MERIT AID

\$27,700
AVERAGE INSTITUTIONAL AID
FOR FALL 2024 FRESHMEN
(DOES NOT INCLUDE GOVERNMENT AID OR LOANS)

1,000
ACRES OF LIVING LABORATORIES
ACROSS 3 CAMPUS LOCATIONS IN
BUCKS AND MONTGOMERY COUNTIES, PA.

94.4%
CAREER SUCCESS RATE*

GRADUATE ACADEMICS
9 MASTER'S DEGREE PROGRAMS — 1 DOCTORAL DEGREE PROGRAM — 21 CREDIT CERTIFICATES

70+ CLUBS AND
ORGANIZATIONS

85% OF CLASSES HAVE FEWER THAN 30 STUDENTS



▲ A-DAY STUDENT RUN STATE FAIR IN APRIL EACH YEAR

*94.4% of the class of 2024 was working, continuing their education or in service to our country withing one year of graduation.

from
the farm
to the barn

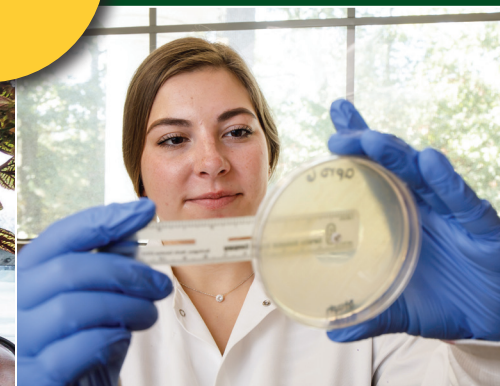


Whether you're in the field or the barn,
you're gaining real-world skills.

in the labs



From microscopes to microphones,
you learn by doing.



in the
residence
hall



Campus housing helps you feel
connected while staying on track.



on the
field



One in three Aggies is a student athlete.
Around here, game day happens every day.

**YOU'RE
MADE
IN THE
MOMENTS!**

OH, THE PLACES YOU'LL LEARN!

Students gain real-world experience in labs, barns, greenhouses, studios, and on the turf, applying knowledge in practical settings. Every major is rooted in hands-on learning that prepares for success.

where ideas click



real-world experience



nature's classroom



BE A WILDLIFE WARRIOR. 100% REAL-WORLD EXPERIENCE.

With our award-winning Experience360 program, your path to success kicks off with hands-on adventures—both on campus and out in the real world. It's not just learning; it's living your future.



BE A...



...horticulturalist.



...veterinarian.



...digital storyteller.



...science visionary.



...future educator.



...turf leader.



...entrepreneur.



...counselor.



...ag innovator.

FIND YOUR PATH AT [DELVAL.EDU/CAREER](https://delval.edu/career)



START STRONG!

DELVAL I (FALL SEMESTER, FRESHMAN YEAR)

- ▶ Where to go for help for everything A – Z
- ▶ Get organized
- ▶ How to conduct research at the library
- ▶ How to register for spring classes
- ▶ Weekly advising and support
- ▶ Career exploration in your field(s) of interest
- ▶ Research growth trends in the industry
- ▶ Research job descriptions and salary projections
- ▶ Research paths for advancement in your field

DELVAL II (SPRING SEMESTER, FRESHMAN YEAR)

- ▶ Team work with guided class activities and group work
- ▶ Problem-based experiential learning activities
- ▶ Critical thinking
- ▶ Clear and convincing communication of ideas
- ▶ How skills learned in the classroom translate to career skills
- ▶ Career Preparation
- ▶ Start your résumé
- ▶ Prepare for internship and job interviews
- ▶ Professionalism and networking

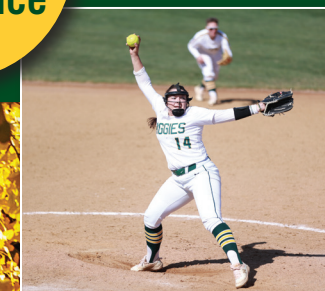
DelVal 1 and 2, résumé writing
and exploring career paths that put
purpose behind every step.

explore
careers



Empowered to lead.
Ready to succeed.

gain
leadership
experience



WHAT IS EXPERIENCE 360?

100% OF
DELVAL GRADS
GAIN REAL-WORLD
EXPERIENCE
THROUGH
EXPERIENCE 360.

experience
hands-on
learning



Discover your path
in labs, farms
and studios.



engage in
community
service



Grow by giving back to local food banks.

dive into
research



Ask big questions.
Find real answers.

And yes, **INTERNSHIPS!**
(Turn the page to read more!)



RÉSUMÉ READY. REAL-WORLD EXPERIENCE.
RECENT STUDENT INTERNSHIPS AND EMPLOYMENT

INTERNSHIPS AND
EMPLOYMENT EXPERIENCES

Academy of Natural Sciences of Drexel University
ACME Markets
Adelphi Research
ADP Canada
Adventure Aquarium in Camden
Alaska Sea Life Center
Alta Genetics USA Inc.
AmeriCorps
Autism Cares Foundation
Baltimore Ravens
Barn Nature Center
BAYADA Home Health Care
Bell & Evans
Bristol Myers Squibb
Bronx Zoo
Bucks County Court of Common Pleas
Campbell's
Cape May County Zoo and Park
Central Bucks School District
Clemens Food Group
Colmar Vet Hospital
Congressional Country Club
Conservancy of Southwest Florida
Dow Chemical Company
EA Global Properties
Elmwood Park Zoo
Eurofins Scientific
Fire Island National Seashore
Freedom Pay
Geico Insurance
Godshall's Quality Meats
Greco Promotions
Growmark FS, LLC

Highpoint Law Offices, P.C.
John Carroll High School
Kellogg's
Labcorp Drug Development
Lampire Biological Laboratories
Lloyd's of London
Longwood Gardens
Maryland Farm Bureau
McCormack
Merion Golf Club
Metuchen Country Club
Mike Miller Ferrier Service
Mountaire Farms
National Aquarium in Baltimore
National Golf Links of America
National Museum of Natural History
National Park Service
Nationwide Agribusiness Insurance
New Jersey Department of Environmental Protection
New Jersey Division of Fish and Wildlife
New Jersey Farm Bureau
NFL Films
Novartis Pharmaceuticals Corp.
Ocean Spray
Pearl S. Buck International
Penn Mutual Life Insurance
PennAg Industries Association
Pennsylvania Department of Agriculture
Pennsylvania Game Commission
Pennsylvania National Guard
Pepsi
Philadelphia Eagles
Philadelphia Phillies

Philadelphia Union
Philadelphia Zoo
Saucon Valley Country Club
Smithfield Hog Production Division
State Farm Insurance
Stroud Water Research Center
Terrain
The National Aviary
Timac Argo USA
TrustFlow Digital Solutions
Turkey Hill
United States Department of Agriculture (USDA)
United States Environmental Protection Agency (EPA)
United States Fish and Wildlife Service
United States Food and Drug Administration (FDA)
United States Marine Corp
Univest Corporation of Pennsylvania
URBN
US Bank
USDA - Natural Resources Conservation Service (NRCS)
USDA Farm Service
W. Atlee Burpee & Company
Vanguard Charitable
Walt Disney World
Wawa Bakeries
Weis Markets, Inc.
Woodbrige High School

EXPERIENCE
ELEVATES SUCCESS
94.4% CAREER OUTCOMES RATE*

GRADUATE SCHOOL SUCCESS

DelVal graduates have been accepted to graduate programs at many universities including:

Auburn University
Delaware Valley University
Drexel University
Georgia State University
Harvard University
Lehigh University
Millersville University
Montana State University
NC State University
Oklahoma State University
PCOM: Philadelphia College of Osteopathic Medicine
Penn State University
Oxford Brookes University, UK
Temple University
Tufts University
University College Dublin
University of Baltimore
University of Florida
University of Idaho, Veterinary Program
University of Kassell, Germany
University of Maryland
University of Missouri
Villanova University
West Chester University
Widener University
(list incomplete)

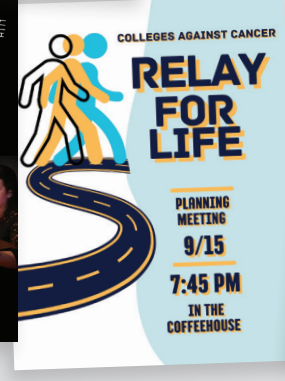
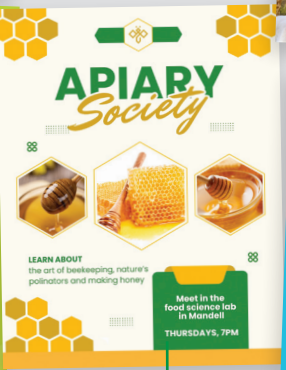
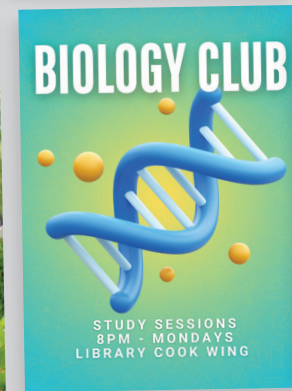
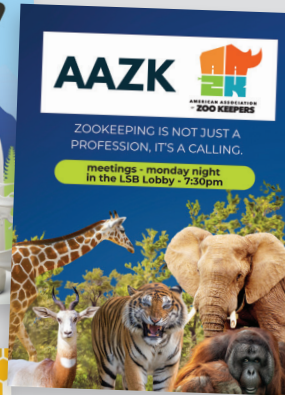
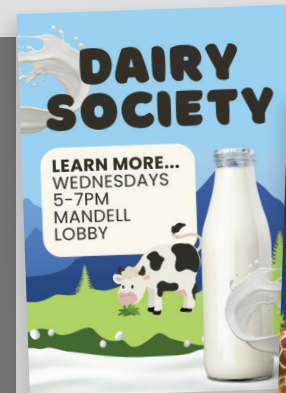
VETERINARY SCHOOL SUCCESS

Auburn University School of Veterinary Medicine
Cornell University College of Veterinary Medicine
Iowa State College of Veterinary Medicine
Lincoln Memorial University in Tennessee College of Veterinary Medicine
Mississippi State University, College of Veterinary Medicine
Ross School of Veterinary Medicine West Indies
Shreiber School of Veterinary Medicine at Rowan University
St. George's Veterinary School Grenada
Tufts University Cummings School of Veterinary Medicine
University of California, Davis School of Veterinary Medicine
University of Edinburgh School of Veterinary Medicine U.K.
University of Florida College of Veterinary Medicine
University of Illinois School of Veterinary Medicine
University of Missouri College of Veterinary Medicine
University of Pennsylvania School of Veterinary Medicine
University of Tennessee College of Veterinary Medicine



94% of graduates from the Class of 2024 were employed, continuing their education or in service to our country within one year of graduation.

Student Life organizes incredible events every semester for everyone to enjoy.



70+ clubs and orgs

DVU Floral Society a place where you can learn, share, and bloom.

From stethoscopes to saddles, the DelVal Pre-Vet Club preps you for every step of your animal-care journey.

Did you know DelVal has an on-campus apiary where students can learn about beekeeping, pollination, and sustainable agriculture?

MANRRS (Minorities in Agriculture, Natural Resources, and Related Sciences) is a national group supporting students in leadership, careers, and agriculture-related fields.

YOU'LL NEVER BE BORED!

At DelVal, there's always something going on, whether it's a live performance, a guest lecture, a club activity, or a campus tradition. Here is just a sampling of the clubs and organizations where you can follow your passions and make new friends.

FROM PIZZA TO PASSPORTS...

DeVal offers a welcoming campus with a vibrant dining hall, engaging student events and unique activities that bring the community together. Your classroom just got bigger with our Place Studies program, where students travel the globe for a week-long, intensive learning experience in extraordinary settings.



▲ Costa Rica

Place
Studies
adventures



▲ Bermuda



▲ Japan



life
happens
here



ALL IN FOR AGGIE ATHLETICS!

30% of DelVal students are athletes—developing the grit, balance, and leadership that employers value in every field



AGGIE ACCOLADES

- ▶ 162 All-Americans
- ▶ 64 Academic All-Americans
- ▶ 741 MAC Academic Honor Roll Student-Athletes
- ▶ 37 MAC Team Championships
- ▶ 161 MAC Individual Championships
- ▶ 6 of the last 7 MAC Football Championships

23 INTERCOLLEGIATE TEAMS

DelVal student-athletes compete in the NCAA Division III Middle Atlantic Conference. This conference has one of the strongest, most competitive schedules in the country.

- | | |
|-------------------|-----------------|
| MEN'S TEAMS | FOOTBALL |
| BASEBALL | GOLF |
| BASKETBALL | LACROSSE |
| CROSS COUNTRY | SOCCER |
| EQUINE Hunt Seat* | TRACK & FIELD** |
| EQUINE Dressage* | WRESTLING |

- | | |
|-------------------|-----------------|
| WOMEN'S TEAMS | LACROSSE |
| BASKETBALL | SOFTBALL |
| CHEERLEADING | SOCCER |
| CROSS COUNTRY | TRACK & FIELD** |
| EQUINE Hunt Seat* | VOLLEYBALL |
| EQUINE Dressage* | WRESTLING |
| FIELD HOCKEY | |

RECREATIONAL ACTIVITIES AND GROUPS

The goal of these programs is to provide students with an enriched experience in the world of recreation. Students have the opportunity to engage in activities that will challenge their minds, spirits and bodies.

- | | |
|-----------------------|--------------------|
| ARCHERY CLUB | GROUP FITNESS |
| BADMINTON CLUB | ROCK CLIMBING CLUB |
| CARRIAGE DRIVING TEAM | SOCCER CLUB |
| COLOR GUARD | SPIKEBALL CLUB |
| DANCE TEAM | VAULTING TEAM |
| EQUESTRIAN – WESTERN | VOLLEYBALL |

*NCAA DOES NOT SPONSOR EQUINE **INDOOR AND OUTDOOR

TALK ABOUT LOCATION.

Named one of the best small towns in the U.S. by USA Today, Doylestown blends classic architecture, rich history and abundant recreation. Surrounded by picturesque landscapes and vibrant attractions, it's the perfect mix of charm and convenience.

- ▶ SEPTA TRAIN STOP ON CAMPUS
- ▶ 25 MILES TO PHILADELPHIA
- ▶ 70 MILES TO NEW YORK CITY
- ▶ LESS THAN 2 HOURS TO THE JERSEY SHORE

ultimate
campus
access



IT'S GO TIME!

PLAN YOUR VISIT

There are regularly scheduled visit days as well as larger open house events during the year. We encourage you to visit and explore our beautiful campus in Doylestown, Bucks County, Pa. Visit our website for tools and information to help you plan your visit at delval.edu/visit.



APPLY TO DELVAL

DelVal is on rolling admissions which means you may apply any time. Our admissions team is here to help you through the process. More at delval.edu/apply.



APPLY FOR FINANCIAL AID

You will be considered for a merit scholarship automatically when you apply. We offer generous, renewable scholarships and our dedicated financial aid team help you find additional, external scholarships to help cover the cost of your education. Learn more at delval.edu/finaid.



TOP 5 REASONS TO APPLY!

- 1 Join a **SMALL, CLOSE-KNIT COMMUNITY** of students, faculty and staff.
- 2 **EXPERIENCE360** is more than an internship program. You will have opportunities for leadership, research, community service and... valuable internships.
- 3 **94.4%** career outcomes rate.
- 4 **UNIQUE PROGRAMS** such as equine science or management, agribusiness, zoo science, conservation and wildlife management, and turf management, to name a few.
- 5 **100% OF STUDENTS RECEIVE MERIT OR NEED-BASED GRANTS.** Average aid in 2024/2025 was \$27,700. (Does not include government aid or loans.)



*94% of graduates from the Class of 2024 were employed, continuing their education or in service to our country within one year of graduation.

27 MAJORS

UNDERGRADUATE MAJORS AND SPECIALIZATIONS

Agribusiness (B.S.)

*Agriculture and Food Marketing
Crops, Horticulture and
Crop Production
Livestock, Dairy and Equine*

Animal Science (B.S.)

*Livestock Science and
Management*

Pre-Professional (Pre-Vet)

Biology (B.S.)

*Environmental Biology
Microbiology and Biotechnology
Pre-Professional (Pre-Med)
Zoology*

Business Administration (B.S.)

*Accounting
Animal Center Management
General Business
Management
Marketing
Sports Management*

Chemistry (B.S.)

Conservation and Wildlife Management (B.S.)

Counseling Psychology (B.A.)

Criminal Justice (B.S.)

Crop Science (B.S.)

Dairy Science (B.S.)

Educational Psychology (B.S.)

English (Writing and Literary Studies, B.A.)

*Literary Studies
Writing and Publication*

Environmental Science (B.S.)

*Environmental Health
Soils and Land Use*

Equine Management (B.S.)

*Assisted Therapies
Business Management
Instruction and Training
Media and Communication*

Equine Science (B.S.)

*Breeding
Pre-Professional (Pre-Vet)*

Food Technology (B.S.)

*Business
Science*

History, Policy and Society (B.A.)

*Policy
Public History*

Horticulture (B.S.)

Cannabis

Interdisciplinary Studies (B.A./B.S.)

Landscape Architecture (B.S.)

Landscape Design/Build (B.S.)

Media and Communication (B.A.)

Nutrition Science (B.S.)

Secondary Education (B.S.)

*Agriculture
Biology
Chemistry
English
General Science
Social Studies*

Small Animal Science (B.S.)

Sustainable Agriculture Systems (B.S.)

Turf Management (B.S.)

Zoo Science (B.S.)

Undeclared / Undecided

PRE-PROFESSIONAL STUDIES

Allied Health

Dentistry

Medicine

Pre-Law

Veterinary Medicine (see
Animal Science, Biology,
Equine Science and Small
Animal Science)

4 + 1 PROGRAMS

*Qualified students may start
taking graduate courses during
their undergraduate years which
allows them to earn master's
degrees in these programs with
just one additional year of study.*

Agribusiness Management (M.S.)

Business Administration (MBA)

Criminal Justice (M.A.)

**Master's of Healthcare
Administration (M.H.A.)**

**Management and Organizational
Leadership (M.A.)**

Public Health (M.P.H.)

HONORS PROGRAM

*Students may apply to the
Honors Program where they
enrich their experience at
DelVal with interdisciplinary
courses, co-curricular events,
and a unique individual project.*



DELAWARE VALLEY
UNIVERSITY

700 E. Butler Ave.
Doylestown, PA 18901

Change Service Requested

NON PROFIT ORG
US POSTAGE
PAID
DOYLESTOWN PA
PERMIT 89



The
College
Tour ▶

Meet Our Rockstars!

Hear why students are choosing DelVal in our episode of the TV series, "The College Tour." Watch the episode at delval.edu/TheCollegeTour!

